

for cucurbit powdery mildews (*Sphaerotheca fuliginea* (Schlecht. ex Fr.) Poll. and *Erysiphe cichoracearum* DC ex Merat). Pages 75-76 in: Cucurbitaceae 88, Proc. Eucarpia Meet. Cucurb. Genet. Breed. G. Risser and M. Pitrat, eds. I.N.R.A. Serv. Ind. Agric. Aliment., Paris.

3. Bertrand, F. 1991. Les Oïdiums des Cucurbitacées: Maintien en culture pure, étude de leur variabilité et de la sensibilité chez le melon. Ph.D. thesis. University of Paris XI, Orsay, France.

4. Clare, B. G. 1958. The identity of the Cucurbits powdery mildew of South-eastern Queensland. Aust. J. Sci. 20:273-274.

5. El-Ammari, S. S., and Khan, M. W. 1987. Occurrence of three species of powdery mildews on cucurbits. FAO Plant Prot. Bull. 35:66-67.

6. El-Ammari, S. S., and Khan, M. W. 1990. Incidence and intensity of powdery mildew of cucurbits in Libya. Pages 389-391 in: Proc. Congr. Mediterr. Phytopathol. U., 8th. Actes Editions, Rabat.

7. Epinat, C., Pitrat, M., and Bertrand, F. 1993. Genetic analysis of resistance of five melon lines to powdery mildews. Euphytica 65:135-144.

8. McCreight, J. D., Pitrat, M., Thomas, C. E., Kishaba, A. N., and Bohn, G. W. 1987. Powdery mildew resistance genes in muskmelon. J. Am. Soc. Hortic. Sci. 112:156-160.

9. Robinson, R. W., and Provvidenti, R. 1975. Susceptibility to powdery mildew in *Citrullus lanatus* (Thunb.) Matsum. & Nakai. J. Am. Soc. Hortic. Sci. 100: 328-330.

10. Sitterly, W. R. 1978. Powdery mildews of

Cucurbits. Pages 360-379 in: The Powdery Mildews. D. M. Spencer, ed. Academic Press, London.

11. Sowell, G., Jr. 1982. Population shift of *Sphaerotheca fuliginea* on muskmelon from race 2 to race 1 in the southeastern United States. Plant Dis. 66:130-131.

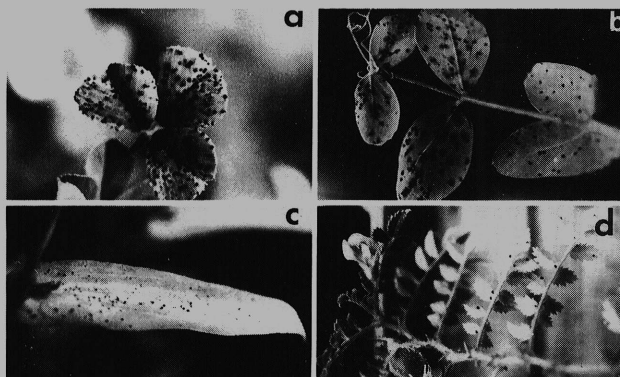
12. Thomas, C. E. 1978. A new biological race of powdery mildew of cantaloups. Plant Dis. Rep. 62:223.

13. Thomas, C. E., Kishaba, A. N., McCreight, J. D., and Nugent, P. E. 1984. The importance of monitoring races of powdery mildew on muskmelon. Cucurb. Genet. Coop. Rep. 7:58-59.

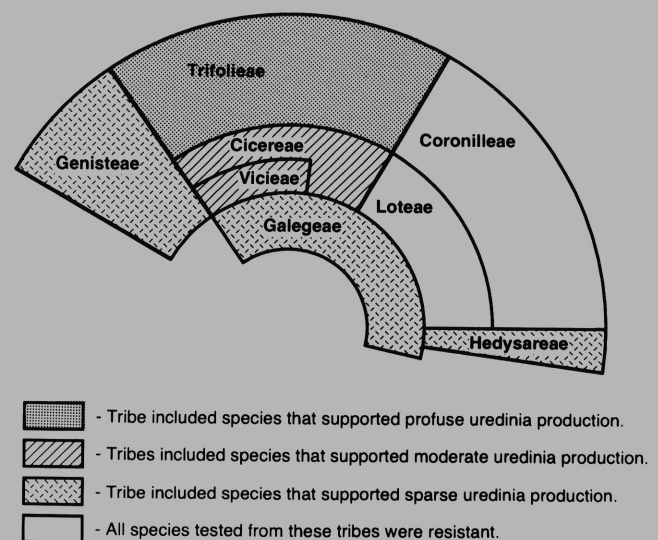
14. Zaracovitis, C. 1965. Attempts to identify powdery mildew fungi by conidial characters. Trans. Br. Mycol. Soc. 48:553-558.

#### ERRATUM/Volume 79, Number 5, 1995

In the article "Host Range Expansion of the Alfalfa Rust Pathogen" by D. Z. Skinner and D. L. Stuteville on pages 456-460, Figures 1 and 2 and their captions should appear as follows:



**Fig. 1.** Examples of uredinia production by isolate KR1-1 of *Uromyces striatus* on (A) *Medicago sativa*, (B) *Pisum sativum*, (C) *Lathyrus aphaca*, and (D) *Cicer anatolicum*.



**Fig. 2.** Leguminous plant tribes including species that supported profuse, moderate, or sparse uredinia production by *Uromyces striatus* superimposed on a representation of the suggested phylogenetic relationships of the tribes (after Polhill, 1981, pages 191-208). Concentric lines indicate grades of evolutionary advancement; radial lines demarcate series of related tribes.