

Erratum
Vol. 8, No. 7, 1991

Two articles that should have been published together were inadvertently separated in the production process, printed in reverse order, and published in different issues of *Phytopathology*. The two articles are "Diversity of *Xanthomonas campestris* pv. *citrumelo* strains associated with epidemics of citrus bacterial spot in Florida citrus nurseries: Correlation of detached leaf, monoclonal antibody, and restriction fragment length polymorphism assays" by Tim R. Gottwald, A. M. Alvarez, J. S. Hartung, and A. A. Benedict (81:749-753) and "Analysis of *Xanthomonas campestris* pv. *citri* and *X. c. citrumelo* with monoclonal antibodies" by A. M. Alvarez, A. A. Benedict, C. Y. Mizumoto, L. W. Pollard, and E. L. Civerolo (81:857-865). Alvarez et al should have preceded Gottwald et al.

On page 753 of the article by Gottwald et al, literature citation 3 should thus read "Phytopathology 81:857-865."

SUSTAINING ASSOCIATES

- AGDIA INCORPORATED, Elkhart, IN
AGRI-DIAGNOSTICS ASSOCIATES, Moorestown, NJ
AGRICULTURE CANADA, Vineland Station, Ontario
AGRIGENETICS COMPANY, Madison, WI
ALF. CHRISTIANSON SEED CO., Mt. Vernon, WA
AMERICAN CYANAMID CO., Agriculture Center, Princeton, NJ
ASGROW SEED COMPANY, San Juan Bautista, CA
ATOCHEM NORTH AMERICA, Philadelphia, PA
BASF CORPORATION, Research Triangle Park, NC
BUCKMAN LABORATORIES, Memphis, TN
BUSCH AGRIC. RESOURCES INC., Ft. Collins, CO
CALGENE, INC., Davis, CA
CHEVRON CHEMICAL CO., San Ramon, CA
CIBA-GEIGY CORPORATION, Agric. Div., Greensboro, NC
CONVIRON, Asheville, NC
DEKALB PLANT GENETICS, DeKalb, IL
DEL MONTE FOODS USA, Walnut Creek, CA
DOW CHEMICAL USA, Midland, MI
E. I. DUPONT DE NEMOURS & CO., INC., Agric. Chem. Dept., Newark, DE
FERRY MORSE SEED CO., San Juan Bautista, CA
FUNK SEEDS INTERNATIONAL, INC., Bloomington, IL
GEORGE J. BALL INC., West Chicago, IL
GREAT LAKES CHEMICAL CORPORATION, West Lafayette, IN
GRIFFIN CORPORATION, Valdosta, GA
GUSTAFSON, INC., Des Moines, IA
HARRIS MORAN SEED CO., Hayward, CA
H. J. HEINZ CO., Bowling Green, OH
HOECHST ROUSSEL AGRIC. VET. CO., Somerville, NJ
ICI AMERICAS, INC., Richmond, CA
ILLINOIS CROP IMPROVEMENT ASSOCIATION, Urbana, IL
ILLINOIS FOUNDATION SEEDS, INC., Champaign, IL
ISK BIOTECH CORPORATION, Mentor, OH
ISTITUTO DI FITOVIROLOGIA, Torino, Italy
JANSSEN PHARMACEUTICA, Piscataway, NJ
LANDIS INTERNATIONAL, Valdosta, GA
LOXTON RESEARCH CENTRE, Loxton, Australia
MAHARASHTRA HYBRID SEEDS CO., Bombay, Maharashtra, India
MERCK & CO., INC., Rahway, NJ
MOBAY CORPORATION, Kansas City, MO
MONSANTO CO., St. Louis, MO
NOR-AM CHEMICAL CO., Wilmington, DE
NORTHFIELD LAB—DEPT. OF AGRICULTURE, Adelaide, Australia
PEST PROS, INC., Plainfield, WI
PIONEER HI-BRED INTERNATIONAL INC., Johnston, IA
RHONE-POULENC AG COMPANY, Research Triangle Park, NC
RICERCA, INC., Painesville, OH
RJR NABISCO INC., Winston-Salem, NC
ROGERS N K SEED COMPANY, Woodland, CA
ROGERS N K SEED COMPANY, Nampa, ID
ROHM & HAAS CO., Philadelphia, PA
SAKATA SEED AMERICA, INC., Salinas, CA
SANDOZ CROP PROTECTION CORP., Des Plaines, IL
O. M. SCOTT & SONS, Marysville, OH
TRICAL INC., Hollister, CA
UNIROYAL CHEMICAL COMPANY, Bethany, CT
UNOCAL CHEMICALS, West Sacramento, CA
USDA FOREST SERVICE, Ogden, UT
VALENT USA CORPORATION, Tallahassee, FL

You could be receiving *Phytopathology* every month as a benefit of APS Membership.

Better yet, two or all three journals can be yours at substantial member savings.

Choose *Plant Disease*, *Phytopathology*, or *Molecular Plant-Microbe Interactions* when you join APS. See membership application near the back of this issue.

Other Member Benefits Include:

- Monthly Newsletter. *Phytopathology News* keeps you informed about APS happenings.
- FREE Job Placement Service.
- Discounts to 25% on APS Press Publications. Receive Free book catalogs and new title announcements.

APS... More Than Ever Before Your Professional Resource.

Call Now for an Application:

☎ Toll-Free 1-800-328-7560 (MN) 1-612-454-7250

The American Phytopathological Society,
3340 Pilot Knob Road, St. Paul, MN 55121 U.S.A.

Application for Membership

Print or type information in the appropriate grids below. Please abbreviate to fit the grids provided in order to avoid misinterpretations.

Name

First										Initial		Last										Sex (optional)	
																						M F	

Spouse's Name (if husband and wife membership)

First										Initial		Last									

Business Address

Employer/Company/Institution (include department if applicable)																													
Address																													

Address																													
---------	--	--	--	--	--	--	--	--	--	--	--	--	--	--	--	--	--	--	--	--	--	--	--	--	--	--	--	--	--

City																													
------	--	--	--	--	--	--	--	--	--	--	--	--	--	--	--	--	--	--	--	--	--	--	--	--	--	--	--	--	--

State			ZIP/Foreign Number Code										Country (other than U.S.)																

Business Telephone (U.S.) **Business Telephone (outside U.S.)** **Birthdate**

Business Telephone (U.S.)										Business Telephone (outside U.S.)										MO		DY		YR	

Include area code

Facsimile Number Company/University Department Personal

Facsimile Number														

Telex Answerback

Telex Answerback														

Telex Number

Telex Number														

BITNET Address Company/University Department Personal

BITNET Address										@										

MAILING ADDRESS IF OTHER THAN ABOVE
For receipt of APS publications and business correspondence only.

Address																													

City																													
State			Zip/Foreign Number Code										Country (other than U.S.)																

Highest Academic Degree

Year		Degree				

Institution																													

Major Professional Experience

Company/Institution	Year	to	Year
_____	_____	_____	_____
_____	_____	_____	_____
_____	_____	_____	_____

Divisions. APS members may join as many divisions as they wish.

- A Caribbean (\$5 fee)
- B North Central (\$2 fee)
- C Northeastern (\$5 fee)
- D Northeastern Student (\$2.50 fee)
- E Pacific (\$3 fee)
- F Pacific Student (\$1 fee)
- G Potomac (\$3 fee)
- H Potomac Student (\$1.50 fee)
- I International Society of Plant Pathology (\$8 fee)
- K Southern (\$2 fee)
- L Southern Student (\$1 fee)

Please include your division fee with your membership payment.

Student Membership Certification

Student applications must be endorsed by a member of the Society who must renew student certification annually. The above applicant

is enrolled at _____ (college or university)

as a major in _____ (field of study)

The student is not gainfully employed more than two-thirds time. I wish to sponsor this applicant as a student member for one year.

Endorsed by _____

Applicant's Signature

Date

MEMBERSHIP OPTIONS (check one)

These annual membership fees include a subscription to *Phytopathology News*. APS membership begins upon receipt of application and fees.

For journals sent outside the U.S., add a postage surcharge of -

- *Phytopathology* \$18
- *Plant Disease* \$18
- *Phytopathology and Plant Disease* \$31
- *MPMI* \$8

To receive your journals quickly via expedited mail, add a surcharge of -

- *Phytopathology* \$57
- *Plant Disease* \$57
- *Phytopathology and Plant Disease* \$104
- *MPMI* (Please inquire)

Regular Membership

- Phytopathology* \$74
- Plant Disease* \$74
- Molecular Plant-Microbe Interactions* \$86
- Phytopathology and Plant Disease* \$123
- Molecular Plant-Microbe Interactions and Phytopathology* \$135
- Molecular Plant-Microbe Interactions and Plant Disease* \$135
- Molecular Plant-Microbe Interactions, Phytopathology, and Plant Disease* \$184

Husband/Wife Membership

- Phytopathology* \$83
- Plant Disease* \$83
- Molecular Plant-Microbe Interactions* \$94
- Phytopathology and Plant Disease* \$132

- Molecular Plant-Microbe Interactions and Phytopathology* \$143
- Molecular Plant-Microbe Interactions and Plant Disease* \$143
- Molecular Plant-Microbe Interactions, Phytopathology, and Plant Disease* \$193

Student Membership

(Must include endorsement)

- Phytopathology* \$25
- Plant Disease* \$25
- Molecular Plant-Microbe Interactions* \$28
- Phytopathology and Plant Disease* \$42
- Molecular Plant-Microbe Interactions and Phytopathology* \$45
- Molecular Plant-Microbe Interactions and Plant Disease* \$45
- Molecular Plant-Microbe Interactions, Phytopathology, and Plant Disease* \$62

Student Husband/Wife Membership

(Must include endorsement)

- Phytopathology* \$27
- Plant Disease* \$27
- Molecular Plant-Microbe Interactions* \$30
- Phytopathology and Plant Disease* \$44
- Molecular Plant-Microbe Interactions and Phytopathology* \$47
- Molecular Plant-Microbe Interactions and Plant Disease* \$47
- Molecular Plant-Microbe Interactions, Phytopathology, and Plant Disease* \$64

Group Membership

- Phytopathology* \$74
- Plant Disease* \$74
- Molecular Plant-Microbe Interactions* \$86
- Phytopathology and Plant Disease* \$123
- Molecular Plant-Microbe Interactions and Phytopathology* \$135
- Molecular Plant-Microbe Interactions and Plant Disease* \$135
- Molecular Plant-Microbe Interactions, Phytopathology, and Plant Disease* \$184

Sustaining Associate Membership

- Phytopathology, Plant Disease, and Molecular Plant-Microbe Interactions* \$350

Subscription Rates for Nonmembers

- Phytopathology* \$225/year in U.S.A.; \$260/year elsewhere.
- Plant Disease* for individuals - \$85/year in U.S.A.; \$115/year elsewhere.
- Plant Disease* for institutions - \$210/year in U.S.A.; \$240/year elsewhere.
- Molecular Plant-Microbe Interactions* for individuals - \$75/year in U.S.A.; \$95 elsewhere.
- Molecular Plant-Microbe Interactions* for institutions - \$235/year in U.S.A.; \$255 elsewhere.

To Complete the Grids, Please Use the Classification Codes Provided Below.

Principal Area of Expertise

(Choose one)

- A Agronomy
- B Bacteriology
- C Biochemistry
- D Botany
- E Breeding
- F Cell Biology
- G Ecology
- H Entomology
- I Genetics
- J Horticulture
- K Microbiology
- L Molecular Biology
- M Mycology
- N Nematology
- O Plant Pathology
- P Plant Physiology
- U Seed Pathology
- Q Soil Science
- R Viticulture
- S Virology
- T Other _____

Title/Function

(Choose up to two)

- 001 Agronomist
- 002 Bacteriologist
- 003 Biochemist
- 004 Botanist
- 005 Breeder
- 006 Cell Biologist
- 007 Chairman
- 008 Chief
- 009 Dean
- 010 Department Head
- 011 Director
- 012 Epidemiologist
- 013 Epidemiologist
- 014 Geneticist
- 015 Graduate Student
- 016 Group Leader
- 017 Horticulturist
- 018 Instructor/Lecturer
- 019 Leader
- 020 Librarian
- 021 Manager
- 022 Molecular Biologist
- 023 Mycologist
- 024 Nematologist
- 025 Plant Pathologist
- 026 Asst. Plant Pathologist
- 027 Assoc. Plant Pathologist
- 028 Extension Plant Pathologist
- 029 Plant Physiologist
- 030 Post Doctoral
- 031 Private Practitioner/Tech. Advisor
- 032 President
- 033 Exec. Vice President
- 034 Asst. to President
- 035 Project Leader
- 036 Professor
- 037 Asst. Professor
- 038 Assoc. Professor
- 039 Professor Emeritus
- 040 Provost
- 041 Retired
- 042 Scientist
- 043 Asst. Scientist
- 044 Assoc. Scientist
- 045 Soil Scientist
- 046 Superintendent
- 047 Supervisor
- 048 Technician
- 049 Technical Sales/Service
- 050 Virologist
- 051 Viticulturist
- 052 Other _____

Commodity Specialization

(Choose up to three)

- 001 All crops
- 002 Alfalfa
- 003 Almond
- 004 Apple
- 005 Avocado
- 006 Barley
- 007 Banana/Plantain
- 008 Bean
- 009 Blueberry
- 010 Cane Fruits
- 011 Cereal Crops
- 012 Cherry
- 013 Christmas Trees
- 014 Citrus
- 015 Clover
- 016 Cole Crops
- 017 Corn
- 018 Cotton
- 019 Cranberry
- 020 Cucurbits
- 021 Field Crops
- 022 Flax
- 023 Forages
- 024 Forest/Nurseries
- 024 Forest Tree
- 025 Fruit
- 026 Grape
- 027 Grasses
- 028 Hardwood Tree
- 029 Legumes
- 030 Market and Storage
- 031 Mint
- 032 Nursery Crops
- 033 Oats
- 034 Ornamentals
- 035 Pea
- 036 Peach
- 037 Pear
- 038 Peanut
- 039 Plum
- 040 Potato
- 041 Rice
- 042 Root Crops
- 043 Rye
- 044 Safflower
- 045 Shade Tree
- 046 Softwood Tree
- 046 Sorghum
- 047 Soybean
- 048 Strawberry
- 049 Sugar Beet
- 050 Sugarcane
- 051 Sunflower
- 052 Sweet Corn
- 053 Sweet Potato
- 054 Tobacco
- 055 Tomato
- 056 Tropical/Subtropical Fruits
- 057 Tropical Root Crops
- 058 Turf Grasses
- 059 Vegetables
- 060 Walnuts
- 061 Wild Rice
- 062 Wheat
- 063 Other _____

Interest/Research Special Area

(Choose up to three)

- 001 Abiotic Diseases
- 002 Administration
- 003 Aero and Space Biology
- 004 Air Pollution
- 005 Bacterial Genetics
- 006 Bacteriology and Bacterial Diseases
- 007 Consulting
- 008 Control Plant Diseases - Biological
- 009 Control Plant Diseases - Breeding Resistance
- 010 Control Plant Diseases - Chemical (General)
- 011 Control Plant Diseases - Chemical (Bactericide)
- 012 Control Plant Diseases - Chemical (Fungicide)
- 013 Control Plant Diseases - Chemical (Nematicide)
- 014 Control Plant Diseases - Regulatory
- 015 Deterioration of Plant Products
- 016 Diagnostics
- 017 Ecology of Microorganisms and Disease
- 018 Epidemiology (Ecological)
- 019 Epidemiology (Quantitative)
- 020 Extension
- 021 Genetics of Microorganisms and Parasitism
- 022 Industrial Microbiology
- 023 Integrated Pest Management
- 024 Molecular Biology
- 025 Mycoplasma-like and Rickettsialike Diseases
- 026 Mycotoxicology
- 027 Mycology and Fungus Diseases
- 028 Nematology and Nematode Diseases
- 029 Parasitic Seed Plants
- 030 Physiology of Microorganisms
- 031 Physiology of Parasitism
- 032 Plant Disease Losses
- 033 Plant Disease Survey
- 039 Seed Pathology
- 034 Soilborne Pathogens and Diseases
- 035 Teaching
- 036 Vector Mediated Transmission of Plant Disease
- 037 Virology and Virus Diseases
- 038 Other _____

Purchasing Responsibility

(Choose up to two)

- 001 Scientific Books
- 002 Culture Media, Microbes
- 003 Microscopes
- 004 Molecular Biology Supplies, Enzymes, Plasmids, etc.
- 005 Microbiology Equipment
- 006 Radiolabelled Media, Shakes, Incuba, ELISA, and Other Immunological Detection Equipment
- 006 Radiolabelled Media
- 007 Radiochemicals
- 008 Plant Growth Chambers
- 009 Plant Tissue Culture Media
- 010 Oligodeoxyribonucleotide Synthesis
- 011 Peptide Synthesis
- 012 Antibodies
- 013 Centrifuges, Ultracentrifuges
- 014 Seeds
- 015 Chromatographic Equipment
- 016 Other _____

Other Professional Memberships

(Choose up to three)

- 01 American Society of Agronomy
- 04 Alliance of Crop Consultants
- 07 American Association for the Advancement of Science
- 10 American Horticultural Society
- 13 American Institute of Biological Sciences
- 16 American Society for Microbiology
- 19 American Society for Horticultural Science
- 22 American Society of Plant Physiologists
- 25 Australasian Society of Plant Pathology
- 28 Botanical Society of America
- 31 British Mycological Society
- 34 British Society of Plant Pathology
- 37 Canadian Society of Plant Pathology
- 40 Crop Science Society of America
- 43 Entomological Society of America
- 46 Indian Phytopathological Society
- 49 International Society for Molecular Plant Microbe Interactions
- 52 Mycological Society of America
- 55 Netherlands Society of Plant Pathology
- 58 Phytopathological Society of Japan
- 61 Potato Association of America
- 64 Society of Nematologists
- 67 Weed Science Society of America

Preferred Method of Payment

To cover the cost of my annual dues, division fee(s) and postage surcharge for journal orders sent outside the U.S.:

Enclosed is my:

- Check or money order enclosed payable to APS in U.S. funds.

- Charge my: Visa 
- MasterCard 
- Amer. Ex. 

Card No.

Expir. Date

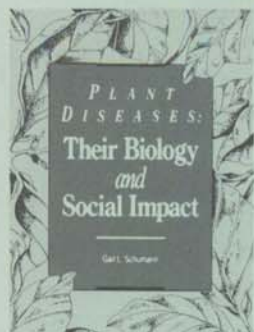
Mo. Yr.

Signature



Mail to: The American Phytopathological Society, 3340 Pilot Knob Road, St. Paul, MN 55121-2097 U.S.A.

THREE **NEW** TITLES FROM APS PRESS



Plant Diseases: Their Biology and Social Impact

By Gail L. Schumann

This introductory textbook teaches the basics of plant and microbial biology while explaining phytopathology and its cultural relevance. Although written as a general biology course, it will also give seasoned pathologists a unique overview of the cultural and historical aspects of their science.

Contents:

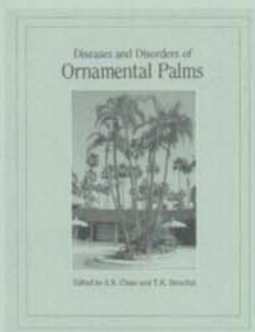
The Irish Potato Famine and the Birth of Plant Pathology; Introduction to the Fungi and Their Life Cycles; Pathogens and Quarantines; Bacteria; Genes and Genetic Engineering; Plant Disease Epidemics and Their Management; Pesticides; Soil, The Rhizosphere, and Soilborne Pathogens; Fungi in Food: Natural Poisons and Gourmet Delicacies; Rusts; Dying Trees and Parasitic Plants; Viruses and More Recently Discovered Pathogens; Environmental Diseases and Problems; Plant Diseases in a Hungry World; Glossary; Index.

1991; 6" x 9" hardbound textbook; 397 pages; 271 photographs and illustrations.

U.S. Price \$45 ■ Elsewhere \$56

(prices include postage)

ISBN 0-89054-116-7



Diseases and Disorders of Ornamental Palms

Edited by A.R. Chase and T.K. Broschat

This guide's 208 detailed color photographs simplify identification of palm problems. Micrographs of pathogens are included where possible, to further aid the diagnostician. Descriptions include symptomatology, causal organism, occurrence, species affected, diagnostic techniques and prevention and treatment procedures.

Partial Contents:

Diseases—Algal Leaf Spot, Bacterial bud rot, Calonectria leaf spot, Damping-off, Fusarium wilt, Graphiola leaf spot, Mosaic, Phytophthora diseases, Pseudomonas blight, Rachis blight, Stigmata leaf spot; Thielaviopsis bud rot; **Physiological Disorders**—Albinism, Hapaxanthic flowering, Herbicide toxicity; 13 Appendices.

1991; 8½" x 11" softcover format; 64 pages; 208 color photographs, 3 black and white illustrations.

U.S. Price \$27 ■ Elsewhere \$34

(prices include postage)

ISBN 0-89054-119-1



Biological and Cultural Tests for Control of Plant Diseases, Volume 6

Edited by W.F. Wilcox

Introducing the sixth annual title in this informative series. It contains the latest findings in areas of cultivar performance, biological control agents, and cultural practices for plant disease control. This contains reports based on replicated disease control tests involving nonchemical means. Included are tests for fruits and nuts, vegetables, corn and sorghum, soybeans, small grains, field crops, turfgrass, ornamentals and trees, citrus and tropical.

Volume 6 includes a Special Report on *Control of Soilborne Plant Pathogens with Biological Control Agents*, by Gary E. Harman of the New York State Agricultural Experiment Station at Cornell University.

1991; 8½" x 11" softcover format; 128 pages.

U.S. Price \$20 ■ Elsewhere \$25

(prices include postage)

ISSN 0887-2236(91)

SAVE AN EXTRA 10% WHEN YOU ORDER ALL THREE BOOKS

To Order by Mail Complete the form below and mail today to APS Press, 3340 Pilot Knob Road, St. Paul, MN 55121-2097 U.S.A.

☎ **Order Toll-FREE 1-800-328-7560**

in the continental United States

In Minnesota 612/454-7250

Monday-Friday, 8:00 a.m.-4:00 p.m. (CST). Charge orders, please have your credit card number ready or ask the operator to bill you.

Yes, please send me the following book(s):

Mail Order Form

E09

_____ copies of *Plant Diseases: Their Biology and Social Impact* at the price of \$45 in the U.S. or \$56 elsewhere. ISBN 0-89054-116-7

_____ copies of *Diseases and Disorders of Ornamental Palms* at the price of \$27 in the U.S. or \$34 elsewhere. ISBN 0-89054-119-1

_____ copies of *B & C Tests, Volume 6* at the price of \$20 in the U.S. or \$25 elsewhere. ISSN 0887-2236(91)

APS Members Only

As a benefit of membership, please deduct 15% from the U.S. price of the book. APS members living outside the U.S. deduct 25% from the "elsewhere" price.

APS Member Nonmember

Preferred Method of Payment

Payment enclosed \$_____ Bill me (U.S. Only)

Charge my credit card VISA American Express MasterCard

Card# _____ Exp. date _____

Signature _____

Name _____

Co./Inst. _____

Address _____

City/State _____

Zip/Country _____

Telephone _____

Payment must accompany all orders to be shipped outside the U.S. Make checks payable to APS in U.S. funds through a member bank of the U.S. Federal Reserve System. Minnesota residents add 6.5% sales tax. To be valid, domestic claims for undelivered books must be made within 45 days of your order; overseas claims, 4 months. Orders to be shipped to a P.O. box must be accompanied by payment.

FAX 612-454-0766 ■ TELEX 6502439657 (MCI/UW)

Mail today to:

APS Press, 3340 Pilot Knob Road, St. Paul, MN 55121-2097 U.S.A.