

Erratum
Vol. 77, No. 11, 1987

In the article, Identification of Pectinases Produced in Cotton Bolls Infected with *Aspergillus flavus*, by Thomas E. Cleveland and Susan P. McCormick appearing on pages 1498-1503, figures 1 and 2 were reproduced with elements missing. Below the figures and captions are reprinted as they should appear.

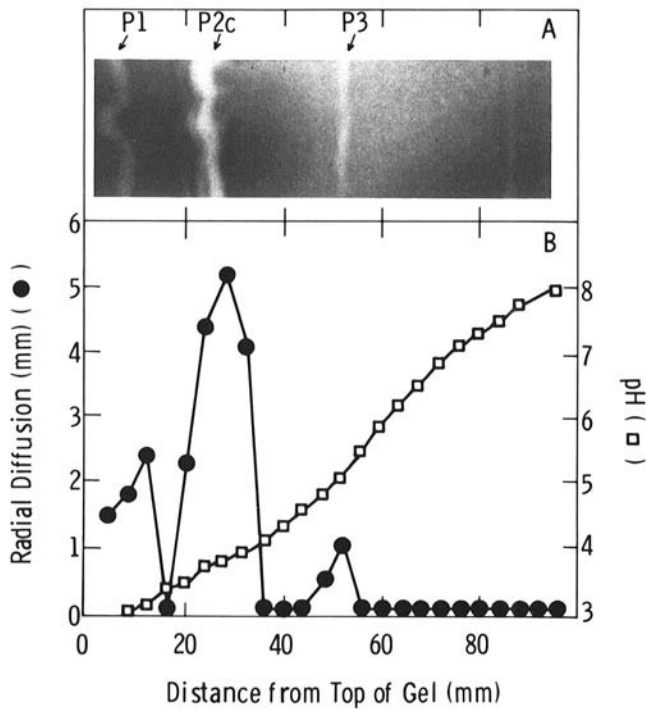


Fig. 1. Isoelectric focusing (IEF) of pectinases extracted from cotton bolls 4 days after inoculation with *Aspergillus flavus*. **A**, Ruthenium red was used to stain pectin-agarose overlays for detection of bands of pectinase activity (unstained regions). **B**, Pectinase activity detected by the radial diffusion method on pectin-agarose. Plugs (3 mm diameter) were removed along the length of IEF gels, placed in 3-mm-diameter wells cut in a layer of pectin-agarose, incubated 16 hr, and stained with ruthenium red. The radius of diffusion of pectolytic activity indicated relative levels of pectinase along the length of the IEF gel.

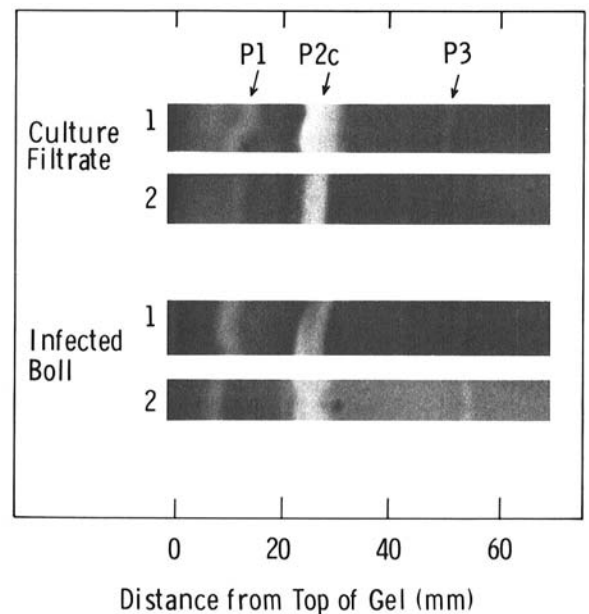


Fig. 2. Comparison of pectinases from *Aspergillus flavus* liquid cultures containing pectin as the carbon source and cotton bolls infected with this fungus (5 days after inoculation). Pectinase activities were resolved by isoelectric focusing and visualized by the pectin-agarose overlay method. Two replicate overlays are shown for each experiment.

SUSTAINING ASSOCIATES

ABBOTT LABORATORIES, Agric. Research Center, Long Grove, IL
ADVANCED GENETIC SCIENCES, INC., Oakland, CA
AGRI-DIAGNOSTICS ASSOCIATES, Cinnaminson, NJ
AGRI-SCIENCES, INC., Long Beach, CA
AGRICULTURE CANADA, Vineland Station, Ontario
ALF CHRISTIANSON SEED CO., Mount Vernon, WA
AMERICAN CYANAMID CO., Agriculture Center, Princeton, NJ
BASF CORPORATION, Parsippany, NJ
BUCKMAN LABORATORIES, Memphis, TN
CALGENE, INC., Davis, CA
CARGILL HYBRID SEEDS, Aurora, IL
CHEVRON CHEMICAL CO., Richmond, CA
CHEVRON CHEMICAL CO., San Francisco, CA
CIBA-GEIGY CORP., Greensboro, NC
DEKALB-PFIZER GENETICS, DeKalb, IL
DEL MONTE CORPORATION, San Leandro, CA
E. I. DUPONT DE NEMOURS & CO., INC., Agric. Chem. Dept.,
Newark, DE
ELI LILLY & CO., Greenfield, IN
FERMENTA PLANT PROTECTION CO., Mentor, OH
FERRY MORSE SEED CO., Modesto, CA
FUNK SEEDS INTERNATIONAL, INC., Bloomington, IL
GREAT LAKES CHEMICAL CORPORATION, West Lafayette, IN
GRIFFIN AG. PRODUCTS CO., Valdosta, GA
GUSTAFSON, INC., Des Moines, IA
HARRIS MORAN SEED CO., Rochester, NY
HARTMAN'S PLANTS, INC., Sebring, FL
H. J. HEINZ CO., Bowling Green, OH
HOECHST ROUSSEL AGRIC. VET. CO., Somerville, NJ
ICI AMERICAS, INC., Goldsboro, NC
ICI AMERICAS, Mountain View, CA
ILLINOIS CROP IMPROVEMENT ASSOCIATION, Urbana, IL
ILLINOIS FOUNDATION SEEDS, INC., Champaign, IL
ISTITUTO DI FITOVIROLOGIA, Torino, Italy
JANSSEN PHARMACEUTICA, Piscataway, NJ
MERCK & CO., Rahway, NJ
MOBAY CORPORATION, Kansas City, MO
MONSANTO AGRICULTURAL CO., Chesterfield, MO
NOR-AM CHEMICAL CO., Wilmington, DE
NORTHRUP KING CO., Woodland, CA
PENNWALT CORP.-Agric. Chem. Division, Philadelphia, PA
PETOSEED CO., INC., Woodland, CA
PFIZER INC.-TEKCHEM, New York, NY
PIONEER HI-BRED INTERNATIONAL CO., Johnston, IA
RHONE-POULENC AG. CO., Research Triangle Park, NC
ROHM & HAAS CO., Philadelphia, PA
ROTHAMSTED EXP. STATION, Herts, England
SAKATA SEED AMERICA, INC., Salinas, CA
SANDOZ CROP PROTECTION CO., Des Plaines, IL
O. M. SCOTT & SONS, Marysville, OH
UNIROYAL CHEM. CROP PROT. R & D, Bethany, CT
USDA FOREST SERVICE, Ogden, UT
W. R. LANDIS ASSOCIATES, INC., Valdosta, GA
W-L RESEARCH, INC., Highland, MD