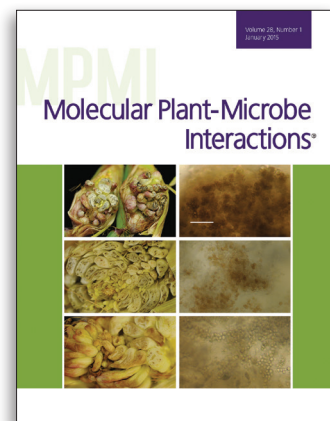


Molecular Plant-Microbe Interactions®

Pioneering research on the fastest growing area of plant pathology.

Molecular Plant-Microbe Interactions (MPMI) is the groundbreaking journal for publication of original, juried research on the molecular biology and molecular genetics of pathological, symbiotic, and associative interactions of microbes with plants, including plant response. APS and the International Society for Molecular Plant-Microbe Interactions sponsor *MPMI*.



Advertising Rates

	1x	3x	6x
Black and white			
1 page (7"w x 10"h)	\$950	\$900	\$850
1/2 page horizontal (7"w x 4.875"h)	\$630	\$600	\$545
1/2 page vertical (3.375"w x 10"h)	\$630	\$600	\$545
1/3 page horizontal (7"w x 3"h)	\$510	\$485	\$445

APS Sustaining Associate Members Save 10%		
1x	3x	6x
\$850	\$810	\$765
\$565	\$540	\$490
\$565	\$540	\$490
\$460	\$435	\$400

Trim size of publication is 8.5" x 11"

Color (additional per page)—Four Color: \$800. Special Positions (additional per page): 4th Cover, \$300; 3rd Cover, \$200; 2nd Cover, \$250. Inserts: Rates available upon request. Add an online sponsor banner ad for \$600 with any full-page print ad.

2015 Close Dates

Issue	Orders Due	Materials Due	Publication Date
January	10/30/14	11/6/14	12/15/14
February	11/24/14	12/8/14	1/14/15
March	12/22/14	1/9/15	2/13/15
April	1/29/15	2/6/15	3/13/15
May	3/2/15	3/10/15	4/14/15
June	4/1/15	4/9/15	5/14/15
July	4/30/15	5/8/15	6/15/15
August	5/29/15	6/8/15	7/14/15
September	6/30/15	7/10/15	8/14/15
October	7/29/15	8/7/15	9/14/15
November	8/31/15	9/9/15	10/14/15
December	10/1/15	10/9/15	11/13/15

Mechanical Requirements

Printing: Offset.

Trim Size: 8.5" x 11"

Binding: Perfect bound.

Bleed Pages: Bleed art must measure 8.625" x 11.25" per page. Keep live matter .25" from trim edge.

Acceptable File Formats

Platform: MacIntosh or PC

Software: Adobe InDesign, Illustrator, and Photoshop

Format: eps or tif; Composite PDF v1.3 (Acrobat 4.0 compatible) press ready.

Resolution: 300 dpi

- 4-color ads must be set up as CMYK (including all graphics).
- All fonts and graphics must be supplied.
- A hard copy of the file must accompany a file supplied on CD or flash drive.
- For color proofing, a SWOP quality contact proof should be supplied.
- Media files provided in other programs, or any other work required to complete the ad, will be subject to additional charges.

General Information

Publisher's Service: Printing production services are cost + 15%. Copy, typesetting, and/or layout is billed at cost + 15%, \$75 minimum.

Commission and Cash Discount: There is a 15% discount applied to recognized agencies if invoice is paid within 30 days. Sorry, no cash discounts. Invoice issued on publication date. **General Policy:** Advertisers and advertising agencies are responsible for all content of advertisements printed and also assume responsibility for any claims arising therefrom made against the publisher. The publisher reserves the right to refuse such advertising as they deem inappropriate for *MPMI*.

Contact for questions/orders: Debi Maines, Advertising Sales Coordinator, +1.856.302.0890, debra_maines@AFassanoCo.com