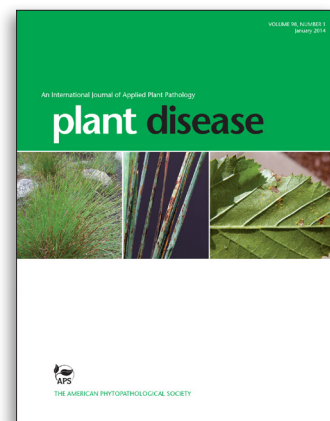


# plant disease

**Plant Disease** is an international journal for reports of original research; for rapid reporting of new diseases and epidemics; for the review of needs, approaches, and accomplishments; and for exchanges of opinions. All with the emphasis on the applied or practical aspects of maintaining and improving plant health.

**Circulation Information:** 1,100 subscribers per month and more than 260,000 downloads per year.



## Advertising Rates

(Black and white)

|   | 1x      | 3x    | 6x    |
|---|---------|-------|-------|
| 1 page (7"w x 10"h) .....                 | \$1,040 | \$985 | \$930 |
| 1/2 page horizontal (7"w x 4.875"h) ..... | \$690   | \$650 | \$610 |
| 1/2 page vertical (3.375"w x 10"h) .....  | \$690   | \$650 | \$610 |
| 1/3 page horizontal (7"w x 3"h) .....     | \$590   | \$555 | \$520 |

APS Sustaining Associate  
Members Always Save 10%

| 1x    | 3x    | 6x    |
|-------|-------|-------|
| \$935 | \$895 | \$835 |
| \$620 | \$585 | \$545 |
| \$620 | \$585 | \$545 |
| \$535 | \$500 | \$470 |

Trim size of publication is 8.5" x 11"

Color (additional per page)—Four Color: \$800. Special Positions (additional per page) 4th Cover: \$300 3rd Cover: \$200 2nd Cover: \$250

Inserts: Rates available upon request.

## 2014 Close Dates

| Issue     | Orders Due | Materials Due | Publication Date |
|-----------|------------|---------------|------------------|
| January   | 11/7/13    | 11/18/13      | 12/18/13         |
| February  | 12/5/13    | 12/16/13      | 1/15/14          |
| March     | 1/3/14     | 1/22/14       | 2/19/14          |
| April     | 2/10/14    | 2/19/14       | 3/19/14          |
| May       | 3/11/14    | 3/20/14       | 4/17/14          |
| June      | 4/10/14    | 4/21/14       | 5/19/14          |
| July      | 5/9/14     | 5/20/14       | 6/18/14          |
| August    | 6/9/14     | 6/18/14       | 7/17/14          |
| September | 7/11/14    | 7/22/14       | 8/19/14          |
| October** | 8/11/14    | 8/20/14       | 9/18/14          |
| November  | 9/10/14    | 9/19/14       | 10/17/14         |
| December  | 10/8/14    | 10/22/14      | 11/19/14         |

## Mechanical Requirements

**Printing:** Offset.

**Trim Size:** 8.5" x 11"

**Binding:** Perfect bound.

**Bleed Pages:** Bleed art must measure 8.625" x 11.25" per page. Keep live matter .25" from trim edges.

### Acceptable File Formats

**Platform:** MacIntosh or PC

**Software:** Adobe InDesign, Illustrator, and Photoshop

**Format:** eps or tif; Composite PDF v1.3 (Acrobat 4.0 compatible) press ready.

**Resolution:** 300 dpi

- 4-color ads must be set up as CMYK (including all graphics).
- All fonts and graphics must be supplied.
- A hard copy of the file must accompany a file supplied on CD or flash drive.
- For color proofing, a SWOP quality contact proof should be supplied.
- Media files provided in other programs, or any other work required to complete the ad, will be subject to additional charges.

## General Information

**Publisher's Service:** Printing production services are cost + 15%. Copy, typesetting, and/or layout is billed at cost + 15%, \$75 minimum.

**Commission and Cash Discount:** There is a 15% discount applied to recognized agencies if invoice is paid within 30 days. Sorry, no cash discounts. Invoice issued on publication date. **General Policy:** Advertisers and advertising agencies are responsible for all content of advertisements printed and also assume responsibility for any claims arising therefrom made against the publisher. The publisher reserves the right to refuse such advertising as they deem inappropriate for *Plant Disease*.