

APS Committee Leadership Orientation

November 18, 2025



Welcome



Jerry Weiland
Sr. Councilor-at-Large



Olufemi Alabi
Councilor-at-Large



Samantha Thomas
Councilor-at-Large



NEW addition!
Sally Mallowa
Councilor-at-Large

2025-2026 Councilors-at-Large

Agenda

CALs Role to Committees

APS Overview

Roles and relationships

Identifying Next Leaders

Timelines

Experience and Tips from a former chair



apsnet.org/leadershiptools



Councilors-at-Large (CALs) Role

- Serve as a conduit between committees and Council
- Provide support for committee ideas
- Help committees increase year-round activity
- Join your meetings as available



CALs Liaisons to Committees

Jerry Weiland (2023-2026), SR. CAL	Olufemi Alabi (2024-2027)	Samantha Thomas (2025-2028)	Sally Mallowa (2025-2026)
Collections & Germplasm	Extension	Industry	Family & Caregiver
Graduate Student	Regulatory Plant Pathology	Biological Control	Teaching
Host Resistance & Biotechnology Solutions"	Committee for Diversity, Equity, Inclusion (CDEI)	Chemical Control	Bacteriology
Evolutionary Genetics & Genomics	Mycology	Emerging Diseases & Pathogens	Crop Loss Assessment & Risk Evaluation CLARE
Pathogen Resistance	Integrated Plant Disease Management	Epidemiology	Nematology
Postharvest Pathology	Disease Surveillance and Pathogen Detection Methods	Diagnosticians	Molecular & Cellular Phytopathology
Tropical Plant Pathology	Soil Microbiology & Root Diseases	Mycotoxicology	Forest Pathology
Vector-Pathogen Complexes	Virology	Phyllosphere Microbiology	Early Career Professionals
Diseases of Ornamental Plants	Turfgrass Pathology	Seed Pathology	Scientific Communication & Understanding Committee
Professional Pathways Committee	International Programs (OIP)	Private Sector Relations (OPSR)	
Nominations (Sr. CAL 1 year)			

CALs Office Hours

What are these?	When are they?	Recent Topics
<ul style="list-style-type: none">• Virtual gathering• Topic driven• Share ideas• Connect with other committees	<ul style="list-style-type: none">• Late fall and early spring• Announced through APS channels• Zoom invites sent by APS staff	<ul style="list-style-type: none">• November 17 & 18, 2025: Office Hours with Annual Meeting Board• October 15, 2025: Committee Engagement & best practices, annual reports

apsnet.org/leadershiptools



APS Overview

MISSION: Discover, disseminate, and apply new knowledge of plant health worldwide to promote the development and adoption of economically and environmentally sustainable practices.

CORE PURPOSE: Advancing the science of plant pathology.

VISION: Healthy plants assure a sustainable future.



APS Strategic Goals



Goal A

Advancements in plant health science are accelerated through professional collaboration.



Goal B

The workforce has the skills necessary to ensure sustainable plant health.



Goal C

Our science impacts decisions leading to a sustainable future.

2025-2026 Areas of Focus

1. Helping Members Remain **Resilient** Amid Uncertainty
2. Driving **Innovation** and Empowering Entrepreneurship
3. Redesigning **Global** Engagement for Impactful Collaboration

Committees & Strategic Goals



Committees allow us to gather leaders and diverse perspectives to make us stronger



Ensure that we are hearing from our members



Help individual members meet goals for networking, connectedness, leadership, and scientific exchange

What Committees Do



Support and communicate the APS Vision and Mission



Provide community and networking



Opportunities for leadership and professional development



Identify research needs & opportunities that lead to development of educational offerings for members or external stakeholders



Support APS advocacy efforts



Drive priorities of APS in relation to your committee's area of focus

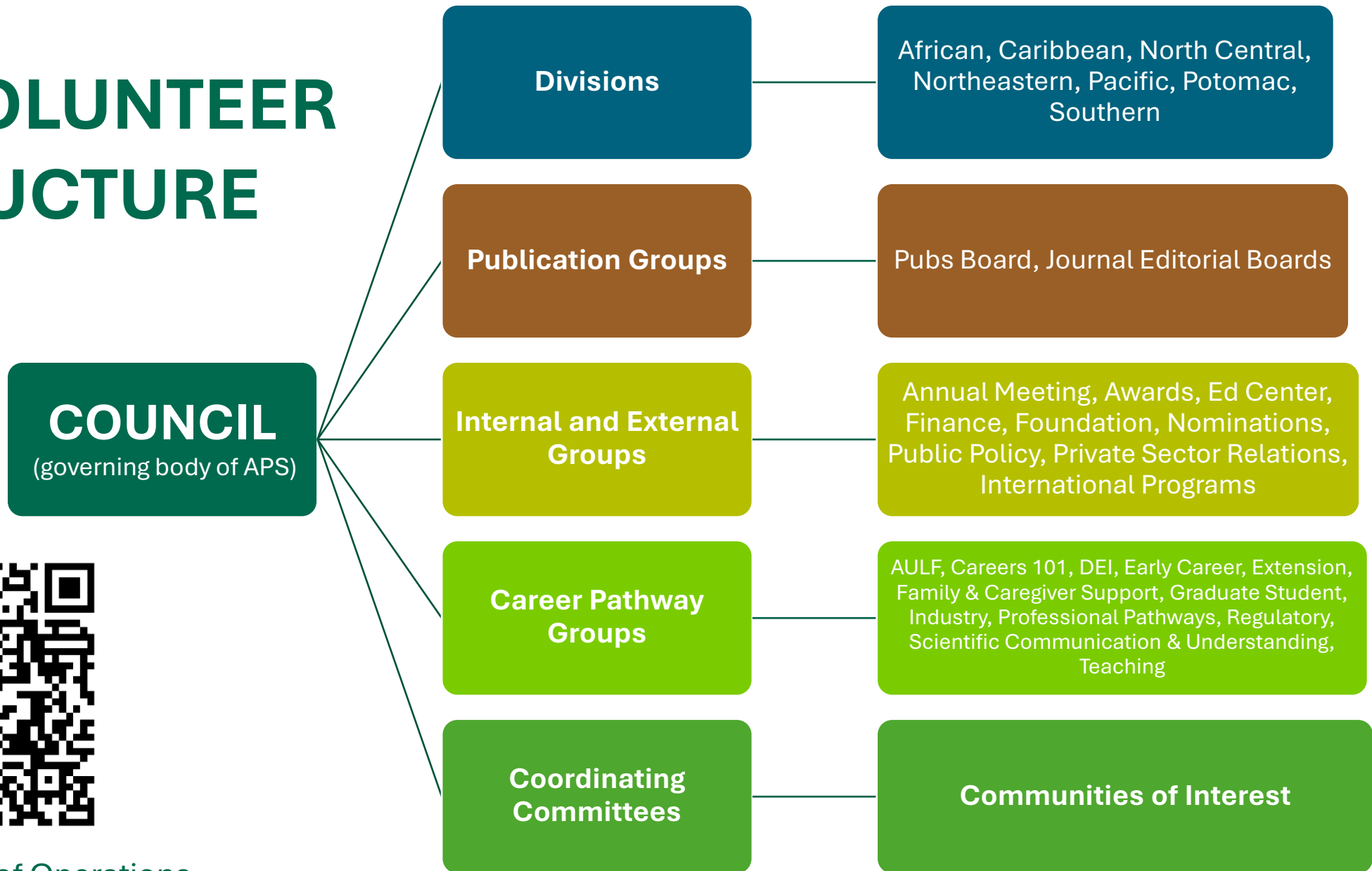


APS Volunteers

More than 1300+ APS members volunteer to:

- Run the society's governance
- Inform public policy
- Develop program and education content
- Review manuscripts
- Edit/review journals and other publications
- Conduct outreach activities
- Organize, research, networking, and development activities

APS VOLUNTEER STRUCTURE



APS Manual of Operations



Framework for 1st discussion with your committee



What is our specific charge (task that we are asked to accomplish on behalf of APS?)



Which APS goal/objective are we helping to achieve?



Who are the key stakeholders impacted by our work?



What do we anticipate will be different for them when we are successful OR what outcomes are we committed to accomplishing on their behalf?



What are the necessary steps we must take to deliver that success and when? How will we make that happen?



Identifying Your Next Leader

Recognize the qualities a person possesses that allow them to STEP INTO the role

Observe who:

- Understands our common sense of purpose or vision
- Engages and motivates others
- Understands and Reinforces an adaptive and agile structure
- Gains the trust of others through self-awareness and candor
- Positions others to lead when appropriate
- Gets results

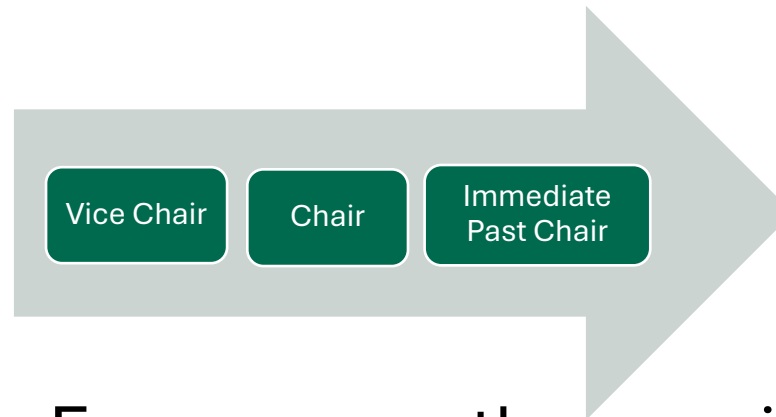


Vice Chair Appointments



Prior to close of Plant Health 2026:

- **Identify** and **Appoint** Incoming Vice Chair for 2026-2027 term
- **3-year rotational role** through chair lineage



- Ensure smooth committee **leadership transition** and **proper onboarding**

APS Timeline

Committee Onboarding

- **Fall & Spring:** CALs Office Hours
- **Fall:** Chair/Vice Chair orientation

Plant Health Events *(e.g. Schroth & Melhus symposium, networking events, special sessions/workshops)*

- **December 1:** Deadline for special sessions & pre-meeting workshops
- **Mid March:** Abstract submission deadline

July: Committee Connections

August 1-4: Plant Health 2026, Providence, Rhode Island

August 4: Vice Chair appointments finalized for 2026-2027 term

- Onboarding and transfer of knowledge to incoming chair

August 31: Committee's annual reports due to Council

Submit Your Ideas for APS Educational Offerings



**SCAN TO SUBMIT
YOUR IDEA TODAY!**

Educational Offering Ideas:

- Webinar or webinar series
- Workshop
- Micro-Course or Course
- Research Forum
- Podcast

Annual Reports to APS Council

DUE AUGUST 31st



APS strategic goals and how your committee is aligned to it



A brief description of activity both at the meeting and year-round activities



Leadership appointments for 2026-2027



Objectives & Outcomes



Requests or Comments to APS Council

Committee Leadership Experiences & Tips



Ruchika Kashyap

APS Early Career Professionals
Committee

2025-2026 Immediate Past Chair

Early Career Professional Committee goals

The purpose of Career Pathways Committees

Community & Networking

For ECP:

Assists early career professionals in academic, cooperative extension, governmental, or industry positions in areas such as training, career opportunities, professional advancement, activity participation at APS annual and division meetings, communication and facilitation of professional contacts and encouragement of greater personal growth.

Events

OFF PLANT HEALTH:

- Reviewing - Schroth faces of Future applications
- Webinars, supporting other committee webinars
- Committee connections
- Annual report
- Planning, hiring VP and Secretary (For ECP)

AT PLANT HEALTH:

- Schroth faces of Future Symposium
- First-timers orientation
- ECP Networking
- Supporting/Organizing special sessions



You are not doing everything alone!

ECP Officer Roles

Immediate Past Chair	Chair	Vice Chair	Secretary
<ul style="list-style-type: none">• Annual report• Schroth Faces of the Future Symposium• Special section submission• Review sponsorship requests	<ul style="list-style-type: none">• Annual report• Schroth Faces of the Future Symposium• section submission• social• Review sponsorship requests• Leadership training• APS events	<ul style="list-style-type: none">• Review for Schroth Faces of the Future Symposium• Review sponsorship requests• Leadership training• APS events	<ul style="list-style-type: none">• Review for Schroth Faces of the Future Symposium• Review sponsorship requests• APS events

Transferring knowledge

- Remember!! It's a three-year role, as a VP you learn, and a Chair you lead and as a past chair you share

- **Things that can help:**

The point is: Plan ahead!!

- Shared drive folders
- Have previous years documents as an example
- Remember timeline
- Have meeting ahead of the deadlines
- Always remember to send two email reminders for any event one week before and the other on the same day

Strategies

■ APS STAFF are your BUDDIES!!

First timers planning and **EXECUTION** – Dominika

Webinar planning – Rehearsal, to Q/As, to breakout rooms...



BUDDY PROGRAM – SOFT LAUNCH

•**Goal:** Foster inclusive, welcoming conference experiences through daily peer engagement

•**Target Audience:** All career stages & sectors

•**Activities:** Shared coffee, meals, poster walks, sessions, networking

•**Soft Launch at Plant Health 2025:**

- Introductions *via* APS conference app
- Promotion at First-Timers Orientation

•**This Year's Call to Action:**

- Seeking **Committee volunteers** to “tag along” with Bud(s) via app connection
- Flexible matching based on participant needs (networking, mentorship, guidance, etc.)

•**Expectations:**

- Plant Health veterans connect with a First Timer via app information exchange
- Meet Bud(s) at least once per meeting day (meet up to session, Plant Health Hub Networking meet-up)
- Facilitate introductions to colleagues, lab mates, collaborators

•**Goal for Next Year:** Full program launch for **APS Plant Health 2026**

Help you publicize and be on track

- Schroth – Linda Schmitt



plant health 2025

2025 Schroth Faces of the Future Symposium: Virology
Monday, August 4 | 12:30–3:30 p.m. HST

Kiran R. Gadhave Andres S. Espindola Alejandro Olmedo-Velerde Jennifer Wilson



plant health 2025

2025 Schroth Faces of the Future Symposium: Virology
Monday, August 4 | 12:30–3:30 p.m. HST

Kiran R. Gadhave Andres S. Espindola

Alejandro Olmedo-Velerde Jennifer Wilson

Handling events

- Have a plan, agenda, theme...
- Have games that help people break the ice and talk to others
- Have fun games as well
- Be prepared for improvising
- You are not alone, you are a team, and you have APS staff



What else can you do?

- Engage, Improvise, and Innovate (Your chance to pitch in ideas and bring the scientific community closer)
- We did not make much use of social media: X, LinkedIn
- Committee Roster
- In-person connections
- Zoom it!!
- Reach out to Liaisons
- APS staff
- Other committees

I hope you have a great term!!

Questions? Contact Us!

Councilors-at-Large

Jerry Weiland	jerry.weiland@usda.gov
Olufemi Alabi	olufemi.alabi@ag.tamu.edu
Samantha Thomas	samantha.thomas@bayer.com
Sally Mallowa	smallowa@augie.edu

APS Staff

Dominika Kuzlak-Swanson	dkuzlakswanson@scisoc.org
Linda Schmitt	lschmitt@scisoc.org

