

This second *Meeting Digest* provides reminders for submission of applications for Student Travel Award, Nominations for Awards, and Nominations for APS-PD Executive Committee. *See More Inside...*

Alberta
British Columbia
Saskatchewan
Alaska
Arizona
✓ California

Four Months to
Pasadena, CA
August 1-5, 2015



Action Items for All APS-Pacific Division Members



Action Items	Deadline	Remarks
Nominate for APS-PD Awards (See page 3)	May 31	Send nominations to Juliet Marshall at jmarshall@uidaho.edu
Nominate for APS-PD Executive Committee (See page 3)	May 31	Send nominations to Juliet Marshall at jmarshall@uidaho.edu
Register	June 4	Abstracts will be withdrawn if not registered by this date



Nominations

Nominations for APS Pacific Division Awards

The APS-PD Executive Committee would like to encourage all members to provide nominations for the following awards:

- 1) [Distinguished Service Award](#)
- 2) [Early Career Award](#)
- 3) [Lifetime Achievement Award](#)

Information on each award is found at the following link at the APS-PD website: <http://www.apsnet.org/members/divisions/pac/Pages/Awards.aspx>

Please forward your nominations to the current APS Pacific Division President (Juliet Marshall at jmarshall@uidaho.edu) **by or before May 31, 2015**



Nominations for APS Pacific Division Executive Committee

The APS-PD Executive Committee would like to encourage all members to provide nominations for the following position on the committee:

- 1) [President-Elect](#) to serve as President starting in June 2016
- 2) [Secretary-Treasurer](#) to serve beginning August 2015
- 3) [Divisional Forum Representative](#) to serve beginning August 2015

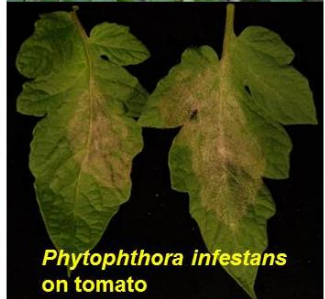
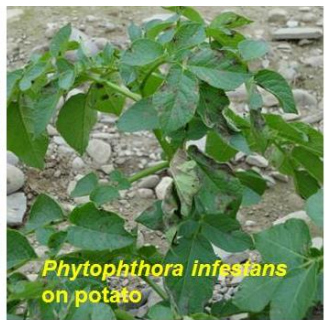
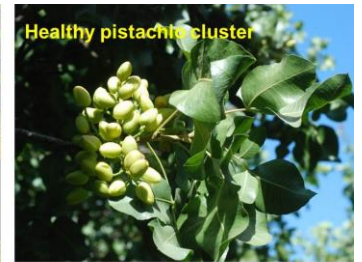
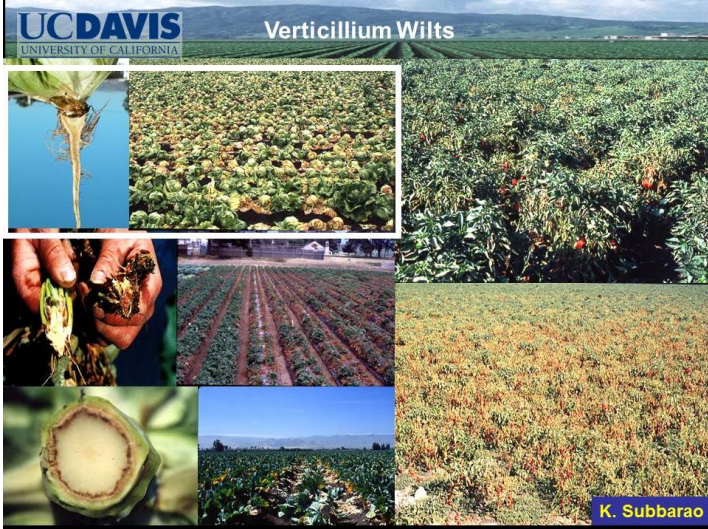
Information on the duties of each position can be found at the following link at the APS-PD website:

<http://www.apsnet.org/members/divisions/pac/Pages/Officers.aspx>

Please forward your nominations to the current APS Pacific Division President (Juliet Marshall at jmarshall@uidaho.edu) **by or before May 31, 2015**

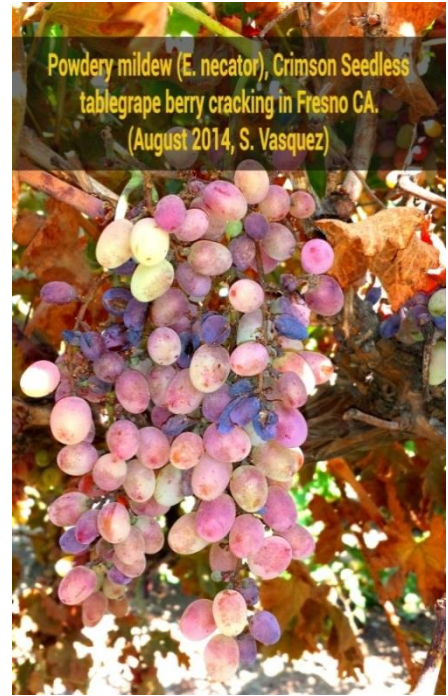


Selections from the Photo Album of Phytopathologists in our Host State



Selections from the Photo Album of Phytopathologists in our Host State

Macrophomina phaseolina on strawberry. Guadalupe, CA. 2014. Pacific Ag Research; Megan LeBlanc



Late season melon vine-decline: Imperial Valley
Macrophomina phaseolina



M. Stanghellini



Pycnidia of *Botryosphaeria* (T. Michailides)



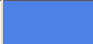




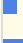
Members Share Their Views on Pacific Division Meeting Attendance

David Gent, Judy Brown, Juliet Marshall, Jay Pscheidt, and Soum Sanogo

A short survey of Pacific Division members was conducted to better understand factors that influence

members' decision to attend divisional meetings. From the 138 members that responded to the survey (a 22% response rate), a number of common themes emerged from the data. The majority of respondents (83%) do not attend divisional meetings regularly.

Table 1. Responses to the question: "How often do you attend APS Pacific Division Meetings held separately from the APS Annual Meeting?"

Answer	Distribution	Response	%
Never		38	28%
Rarely		43	31%
Sometimes		33	24%
Regularly		9	7%
Nearly Always		6	4%
N/A		9	7%

Disproportionally, these individuals tend to be employed by government agencies, private industry, or self-employed and are constrained by time availability, cost, and location of the annual meeting. Many respondents commented that travel restrictions by their agency or employer, and competition with other required meetings, limit their ability to attend divisional meetings. There was generally weak support for joint meetings with other societies or

divisions if the meeting was held outside of the U.S., particularly amongst individuals that never or rarely attend divisional meetings.

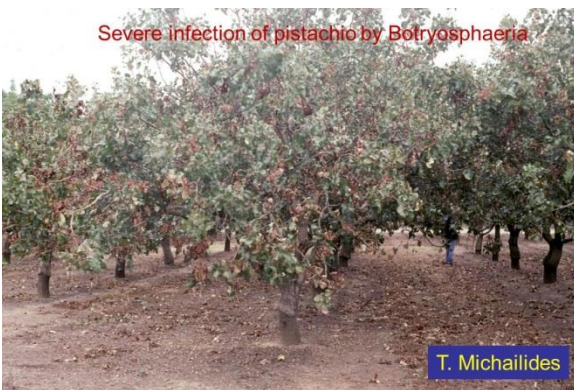
However, for individuals that attend divisional meetings more consistently, factors related to meeting experience were more influential in their decision to attend. Most individuals indicated they were most likely to attend a meeting within driving distance to their place of work as compared to other alternatives.

Overall, the survey confirms that budgets, time, and other commitments are primary constraints to participation in divisional meetings. Individual comments from the survey, though, reaffirm that many individuals enjoy and wish they could attend divisional meetings more regularly. The challenge for the Pacific Division is to find ways to create more value at division meetings, work to reduce costs, and leverage members' time where possible.

Moving forward, the charge to our division is to find new ways to improve the value of attending a divisional meeting through both controlling costs and improving services. The Executive Committee is sensitive to the needs and constraints of the membership, and we are actively seeking a location for the 2016 meeting that will enable the broadest participation of our members and leverage other resources.

Based on this survey, we intend to develop a meeting program that adds value through workshops, more industry engagement, and greater opportunities for undergraduate and graduate student presentations and networking.

A more detailed report of the survey findings is available on the Pacific Division collaborative website.

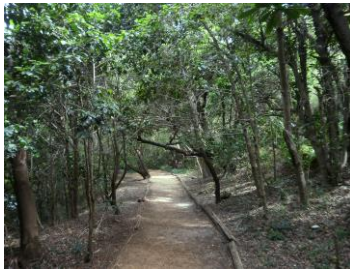


Alberta
British Columbia
Saskatchewan
Alaska
Arizona
✓ California
Colorado
Hawaii
Idaho
Montana
Nevada
New Mexico
Oregon
Utah
Washington
Wyoming



Citizen Science Project by Pacific Division Member Joey Hulbert

Joey Hulbert is a recent MS graduate from Oregon State University who has been accepted into a PhD plant pathology program at the University of Pretoria in South Africa. Joey's PhD project is a citizen science project to survey forests in South Africa for *Phytophthora* spp., particularly focused on engaging disadvantaged communities in South Africa that historically have had little exposure to reasonable education in science. He is seeking crowdfunding support for his project. See the information and link below to learn more about Joey's project and how to support this campaign!



"We plan to survey the indigenous forests of South Africa for *Phytophthora* species with the help of the public. We want to create a citizen science program that teaches the public about forest health and invites them to help sample trees in forests near their communities.

The PhD will be funded but we

are trying to raise support for starting the citizen science program. To do this we have launched a crowdfunding campaign. I am reaching out to you with hope that you will share this project with your social networks, your colleagues, and anyone who may see the value in this project. The below link will take you to the project. There is a 5-minute video that I put together to summarize the scope and value."



<https://experiment.com/projects/discovering-plant-destroyers-in-south-africa-with-citizen-science>

Got **News** and/or **Images** to share with the APS-PD membership?



Alberta
British Columbia
Saskatchewan
Alaska
Arizona
✓ California
Colorado
Hawaii
Idaho
Montana
Nevada
New Mexico
Oregon
Utah
Washington
Wyoming



The logo for the APS Pacific Division, featuring a stylized green leaf design above the text "APS PACIFIC DIVISION" in bold, green, sans-serif capital letters.

Please forward your information to Soum Sanogo at ssanogo@nmsu.edu