



United States Department of Agriculture  
Animal and Plant Health Inspection Service

**Plant Protection and Quarantine**



# *Peace Corps and Plant Pathology: Pathways to Success!*

**Kristina Janor Owens  
Plant Biologist**

**National Plant Germplasm and Biotechnology Laboratory  
Center for Plant Health Science and Technology  
Beltsville, Maryland**

# Graduate education

## Comprehensive, Interdisciplinary & Practical

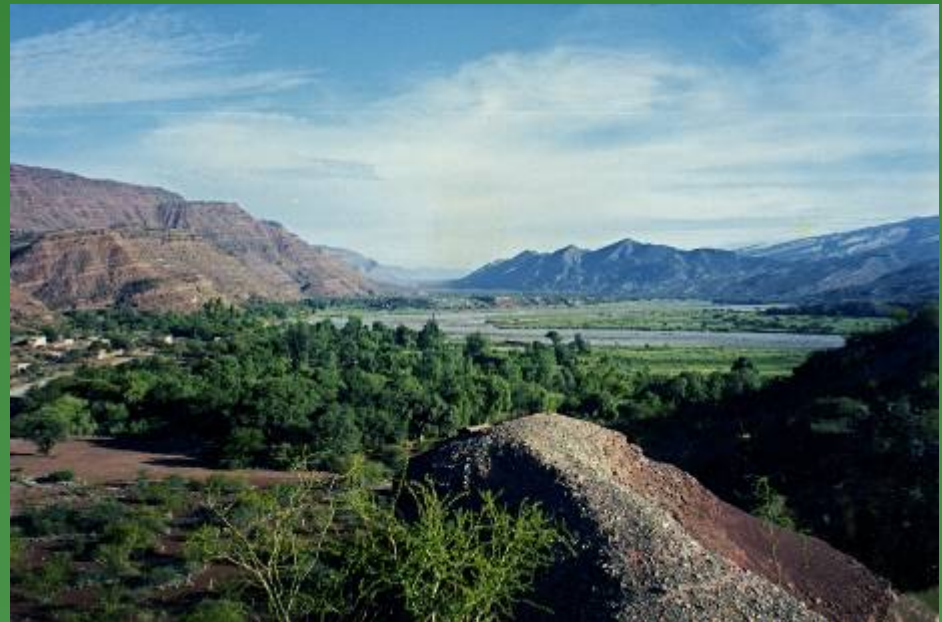
- Traditional forestry courses
- International Forestry, agriculture & Plant science & Health
- International Development: Potential challenges
- Seminars, networking
- Thesis must be focused on not just increasing knowledge but also solve a problem



# Peace Corps Bolivia

Implementing Plant science skills in a developing country

- In country training
  - Technical skills-nurseries, agriculture (irrigation, plant health)
  - Language & Culture



# Peace Corps Bolivia

Implementing Plant science skills in a developing country

- Working in rural conditions: Adjusting to living conditions; Listening to the community; Identifying community needs



# PCV & Masters Student

Helping my community help themselves & implementing a thesis project

- Identified my 'interests' during my year as a graduate student



# PCV & Masters Student

Helping my community help themselves & implementing a thesis project

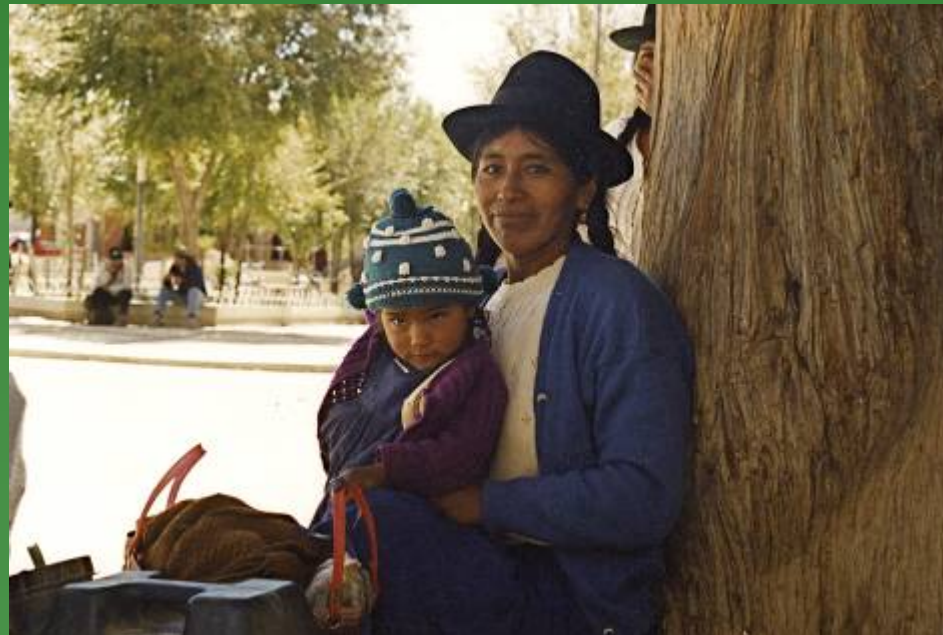
- Listened to my community....



# PCV & Masters Student

Helping my community help themselves & implementing a thesis project

- Successfully completed the project with the help of my community leaders, teachers, students and fellow colleagues



# PCV & Masters Student

Helping my community help themselves & implementing a thesis project

- Conversations, interviews provided explanation of scientific finds

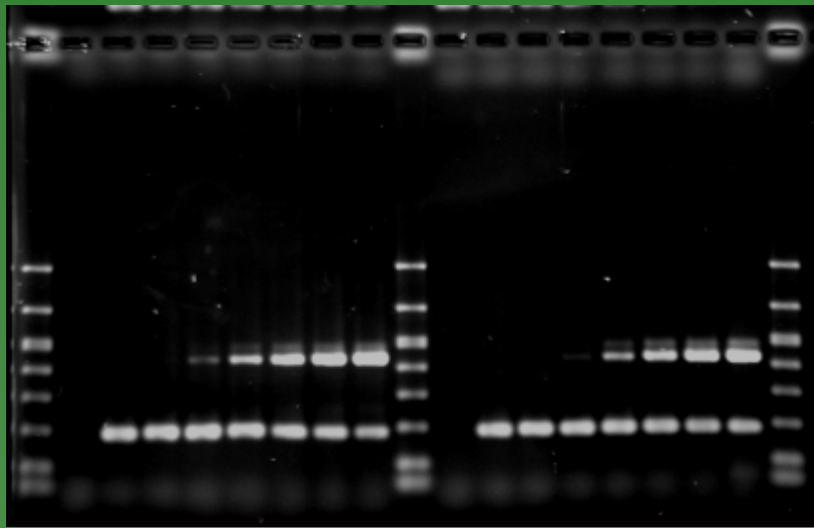




# Early Professional in Plant Pathology

## Plant Biologist –Support Scientist

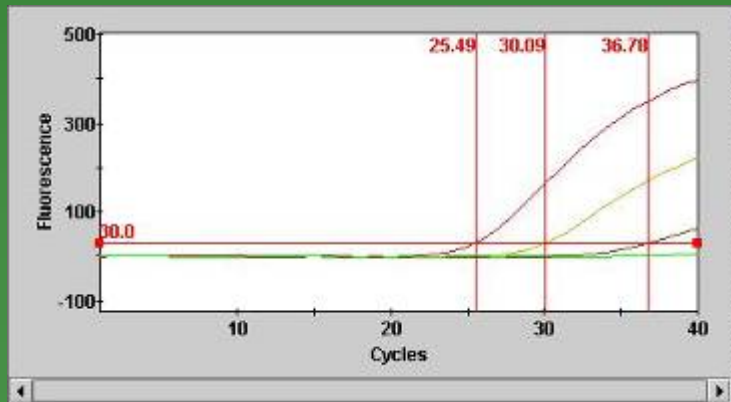
- Developing and adapting detection methods for priority plant pathogens for our stakeholders



# Early Professional in Plant Pathology

## Plant Biologist –Support Scientist

- Validate the performance of the detection methods so they behave as expected in the field



# Early Professional in Plant Pathology

## Plant Biologist –Support Scientist

- Transferring methods to the field through hands-on laboratory training for diagnosticians in plant pathogen detection (e.g. HLB, PCN & SOD)



# Peace Corps, Plant Pathology & Career

Experiences help navigate towards success

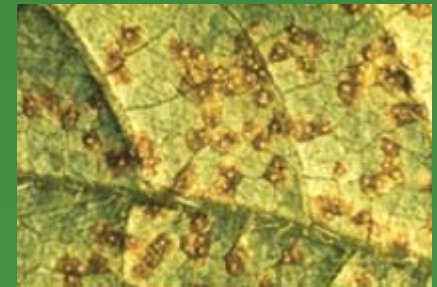
- Comprehensive approach to problems
  - An understanding that diagnostics & methods development has an impact on stakeholders at varying levels
  - Diverse approach to problems: scientific, social and environmental aspects



# Peace Corps, Plant Pathology & Career

Experiences help navigate towards success

- Ability to adapt to change
  - Priorities change depending on the needs of the ‘stakeholder’ (Farmers both domestic & international)
  - New diseases can become priority due to a natural disaster or a discovery of a disease in a new area



## Additional Resources

Peace Corps & Master's International:

[www.peacecorps.gov](http://www.peacecorps.gov)

Contact Eric Goldman [egoldman@peacecorps.gov](mailto:egoldman@peacecorps.gov)

More info about NPGBL contact

Laurene Levy, Laboratory director for  
NPGBL

[laurene.levy@aphis.usda.gov](mailto:laurene.levy@aphis.usda.gov)

